

# SN-TPT4231LZ/M(II)

## Bispectral PTZ Network Camera



- On-Board Temp-Detection Algorithm
- One IP address- Two channels
- Effective Pixels 400x300
- Sensitivity 50mK
- 8/25/50mm motorized lens optional
- Support 17 color control
- Power off self-locking, strong wind resistance
- Anti-frozen
- Standalone operating

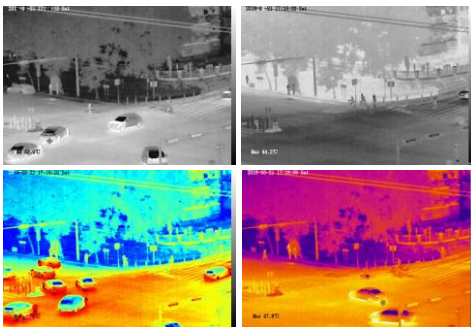
### System Overview

Featuring a motorized lens PTZ camera, this series provides an all-in-one solution that is especially beneficial for long distance video surveillance in outdoor applications. Together with Thermal technology, the camera's long range capabilities are able to be utilized even at night.

### Functions

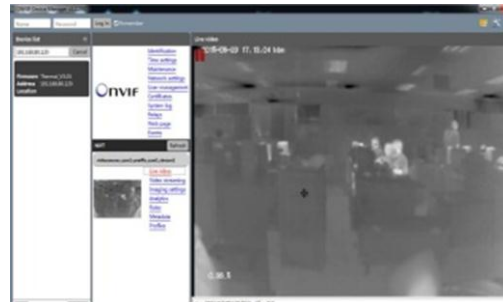
#### Image Color Modes

White hot/black hot/iron bow/rainbow up to 17 modes



#### Compatibility

ONVIF Compatible, also provide CGI and SDK for integration



#### Temperature Detection

Maximum temperature measure from area, up to 8 areas



#### IVS Security

Video Analytics with Perimeter ,Single Virtual Fences ,Double Virtual Fences ,Object Left ,Object Removed



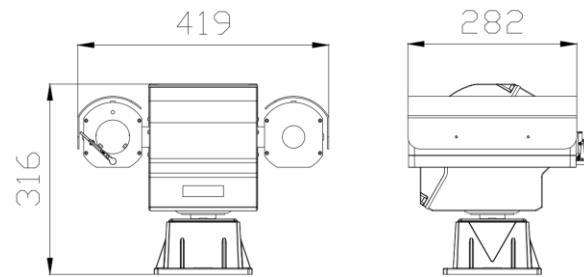
# Technical Specification

Thermal Camera			
Detector Type	Uncooled IRFPA Microbolometer		
Effective Pixels	400(H) × 300(V)		
Pixel Size	20um		
Thermal Sensitivity (NETD)	50mK @F1.0, 300K		
Spectral Range	8~14um		
Image Setting	Polarity LUT/ DVE/ Mirror/ FCC/ /3D DNR Brightness/Contrast/ ROI		
Color Palettes	Black-Heat /White-Heat/Rainbow/Iron-Red up to 17 modes		
Thermal Lens			
Lens Type	Fixed		
Focus Control	Motorized Focus		
Focal Length	8mm	25mm	50mm
F No.	F1.0	F1.0	F1.0
Angle of View	H: 43.6° V: 36.4°	H: 14.6° V: 11°	H: 7.3° V: 5.5°
Detection Distance Fire(1m*1m)	200m	625m	1250m
Detection Distance Man(1.8m*0.5m)	190m	600m	1200m
Detection Distance Vehicle(2.3m*2.3m)	460m	1430m	2870m
Recognition Distance Fire(1m*1m)	67m	210m	420m
Recognition Distance Man(1.8m*0.5m)	64m	200m	400m
Recognition Distance Vehicle(2.3m*1.3m)	150m	480m	960m
Visible Camera			
Image Sensor	1/1.9" Sony CMOS		
Effective Resolution	1920(H) × 1080(V)		
Shutter Speed	1/5 ~ 1/20,000s		
Min. Illumination	Color: 0.001Lux @(F1.2, AGC ON), B/W: 0.1Lux		
S/N Ratio	More than 55dB		
Visible Lens			
Focal Length	6 ~ 180mm		
Max Aperture	F1.5 ~ F4.3		
Angle of View	H: 59° ~ 2.4°		
Optical Zoom	30x		
Focus Control	Auto / Manual		
Close Focus Distance	100mm~ 1000mm (0.33ft~3.28ft)		
PTZ			
Pan/Tilt Range	Pan: 0° ~ 360° endless; Tilt: +90° ~ -90°		
Pan/Tilt Speed	Pan: 0.01° ~60° /s; Tilt: 0.01° ~30° /s		
Preset Speed	Pan: 0.01° ~60° /s; Tilt: 0.01° ~30° /s		

Presets	400
PTZ Mode	8 Auto Scan, 12 Tour, 6 Track
Speed Setup	Auto/Manual (0-8),
Power Off Memory	Support
Idle Motion	Activate Preset/ Scan/ Tour/ Pattern if there is no command in the specified period
Protocol	SN-SD, Pelco-D
Video and Audio	
Compression	H.265, H.264, MJPEG
Frame Rate	Main Stream: Thermal: D1 @25/30fps Visible: 1920×1080/1280×720 @25/30fps Sub Stream: Thermal: CIF @25/30fps Visible: D1/VGA/640×360/CIF/QCIF/QVGA @25/30fps
Bit Rate Control	CBR/VBR
Bit Rate	Thermal: 100Kbps~6Mbps Visible: main stream: 500Kbps~12Mbps; sub stream: 100Kbps~6Kbps
Region of Interest	Off / On (8 Zone, Rectangle)
Electronic Image Stabilization(EIS)	N/A
Digital Zoom	16x
Mirror	Support
Defog	Support
Motion Detection	Support
Privacy Masking	Off / On (4 Area, Rectangle)
DVE Image Enhance	Support
Audio Compression	G.711, AMR, RAW_PCM (Optional)
Intelligence	
Intelligent Functions	Motion detection, Disk alarm, I/O alarm, Temperature alarm
IVS	Perimeter ,Single Virtual Fences ,Double Virtual Fences ,Object Left ,Object Removed
Temperature Detection	
Temperature Detection	Point detection, Area detection
Temperature Alarm	Over temperature alarm, Temperature difference alarm
Precision	Max (±2°C, ±2%)
Detection Area	Support 8 areas (8 target)
Response Time	≤30ms
Effective temperature working environment	-10 °C ~ 55 °C (14°F ~ 131 °F)
Theory of temperature measurement range	-30 °C ~ 200 °C (-22°F ~ 392 °F)
Temperature display mode	Temperature target >5°C, Display absolute temperature value; Temperature target ≤5°C, Display relative temperature value (temperature difference DEV = highest value - average)

Network		
Ethernet	RJ-45 (10/100Base-T)	
Protocols:	IPv4/IPv6, HTTP, RTSP/RTP/RTCP, TCP/UDP, DHCP, DNS, PPPOE, SMTP, SIP, 802.1x	
Interoperability	ONVIF, CGI	
Streaming Method	Unicast	
Max. User Access	10 Users	
Edge Storage	NAS Local PC for instant recording Mirco SD card 128GB	
Web Viewer	<IE11, Chrome, Firefox	
Web Language	English, Chinese, Polish, Italian, Portuguese, Spanish, Russian, French, Czech, Hungarian	
Interface		
Ethernet	1 Ethernet (10/100 Base-T) RJ-45 Connector	
Audio Interface	2ch Audio In, 2ch Audio Out	
Alarm	9ch Alarm In, 4ch Alarm Out	
RS485	Support	
BNC Output	Support	
Reset Button	Support (Built-in)	
General		
Power Supply	AC24V/DC24V	
Power Consumption	Max 80W	
Operating Temperature	-25 °C ~ 55 °C (-13 °F ~ 131 °F)	
Storage Conditions	0~ 90% RH	
Certifications	CE /FCC	
Ingress Protection	IP66	
Casing	Metal	
Dimensions	282 × 419 × 316mm	
Net Weight	16.5Kg (Contains 25 mm lens)	
Ordering Information		
Type Part	Number	Description
SN-TPT4231LZ/M(II)	SN-TPT4231LZ/M8/ZSC30(II)	Thermal: 400 × 300 8mm Motorized lens
	SN-TPT4231LZ/M25/ZSC30(II)	Thermal: 400 × 300 25mm Motorized lens
	SN-TPT4231LZ/M50ZSC30(II)	Thermal: 400 × 300 50mm Motorized lens

## Dimensions(mm)



## Accessories

Optional: N/A