



SunView

Intelligent Security Management Platform



Shenzhen Sunell Technology Corporation

22-23F, Building 2, Chongwen Park, Nanshan Zhiyuan (Phase 3), No. 3370 Liuxian Avenue, Nanshan District, Shenzhen 518052

+86(755) 2675 4336 +86(755) 8602 6152 sales@sunellsecurity.com

©2025 Shenzhen Sunell Technology Corporation. All rights reserved.


The specifications and descriptions of products and services contained in this catalogue were correct at the time of publishing. Inner Range reserves the right to change specifications or withdraw products without notice.

SunView Overview


SunView CMS platform is an intelligent security integrated management platform designed by Sunell for commercial, industrial, residential, and government sectors.

The platform is flexible in deployment, easy to operate, and supports multiple security applications, including intelligent video surveillance, access control, parking lot management, industrial temperature measurement, network broadcasting, and time and attendance. It is customizable to meet specific project requirements, catering to the diverse security needs of users.






100+
Countries & Regions



500,000+
Devices



8
Years

Key Features



Seamless Integration

- Full Product Line Integration
- License authorization for more channels

ONVIF

- 4-ch free
- License authorization required for additional channels



16
Languages

- Adaptive Systems Language
- | | | |
|-----------------------|------------|--------------|
| • English | • Japanese | • Romanian |
| • French | • Korean | • Portuguese |
| • Italian | • Spanish | • Turkish |
| • Polish | • Czech | • Vietnamese |
| • Simplified Chinese | • Russian | • Ukrainian |
| • Traditional Chinese | | |



13000+
Access

SunView suite manages up to 13,000 cameras, optimized for large-scale use.



Windows & Mac OS

- Supports mainstream OS: Win10, Win11, Windows Server
- Supports Mac OS

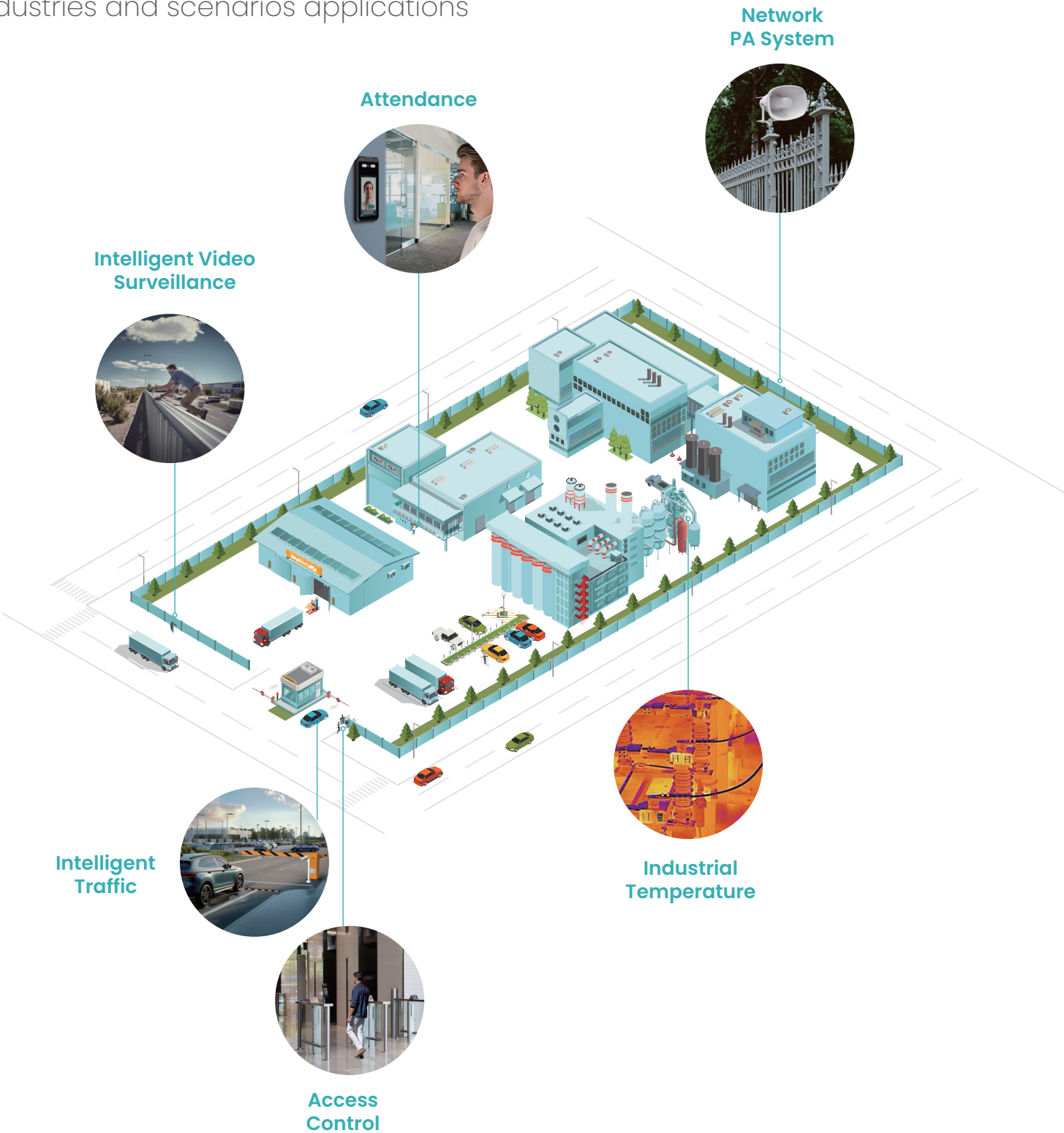


UI
Deep Customization

UI deep customization enables highly personalized and professional user experiences, precisely meeting user needs and brand characteristics.

Professional and Powerful

SunView has rich features to meet different industries and scenarios applications



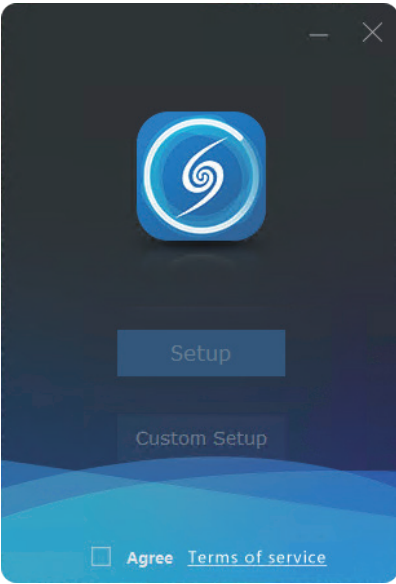
Easy to Use

Zero Configuration, One-click Installation

Setup is a simplified installation of the Mini type, and the installation process does not require any configuration.

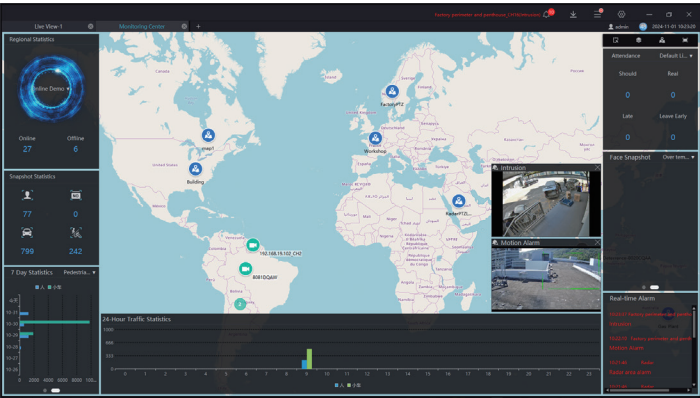
It only takes about 1 minute to complete the installation.

The minimum system requirements for SunView are an i3 CPU and 4 GB of RAM.



Monitoring Center

Intuitively view real-time device status statistics, alarm notifications, captured data, people and vehicle counts, attendance records, and other related information.



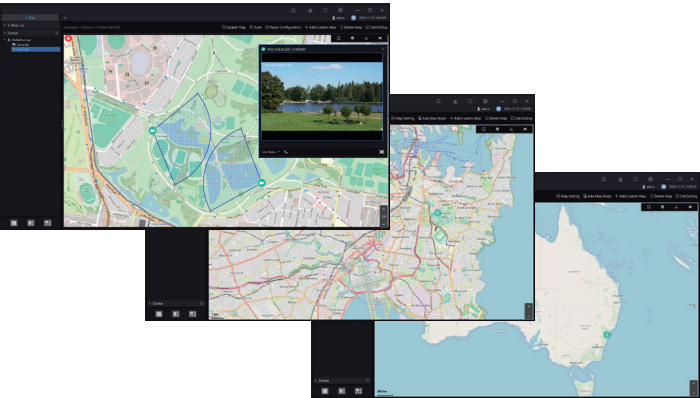
Easy Operations

Functional module visualization, flat design, one-click direct access



Interactive E-Maps

Supports level 6 E-Maps. Interactive map shows device status and perspective. Pop-up notification for alarm events and supports quick playback of recordings.



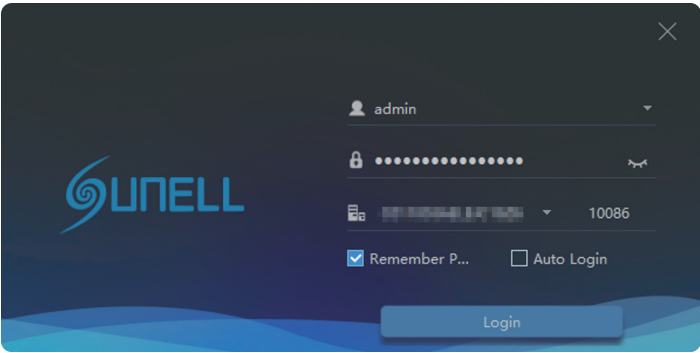
Floating Window

Never miss an alarm notification even if the platform interface is hidden



P2P Login

CMS supports P2P NAT traversal, enabling smooth, stable remote access without complex network setups.



Picture-in-Picture

Two channels of video from a dual-spectrum camera are displayed superimposed in a single video window Adjustable overlay window size



Multi-screen Display

One Machine With Multiple Screens



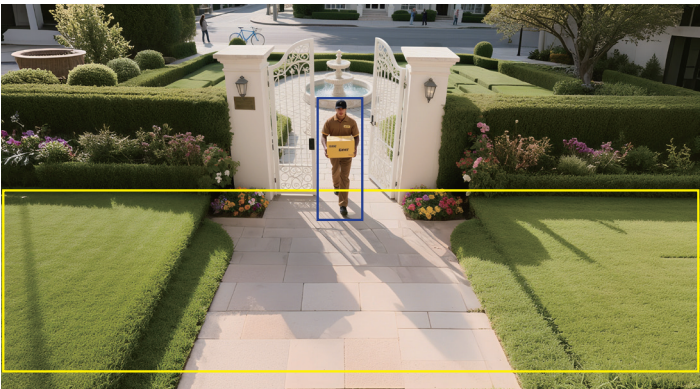
Core Applications

Intelligent Video Surveillance



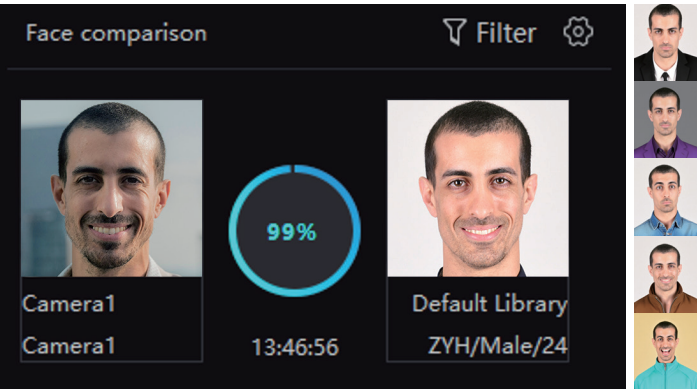
IVS Alarm

- Receive various alarms reported by IP CAIVS Alarm: Intrusion, Single/Double Line Crossing, Loitering, Wrong-way, Illegal Parking, Smart Motion (SMD), etc
- MEARA or other devices



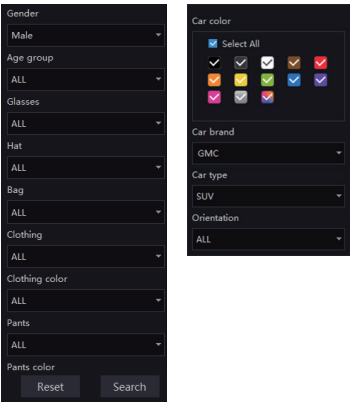
Face Recognition

- Black and white list management, voice broadcast alerts
- Stranger management, see how often strangers appear
- Batch import face library
- Registering 5 Pictures for 1 Person



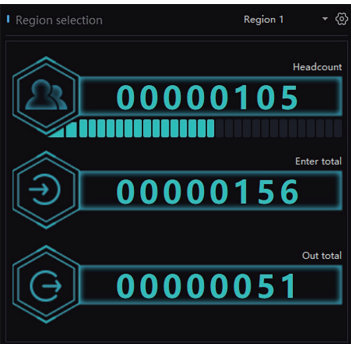
Attributes Retrieval

Human and Vehicle Attribute Recognition and Retrieval



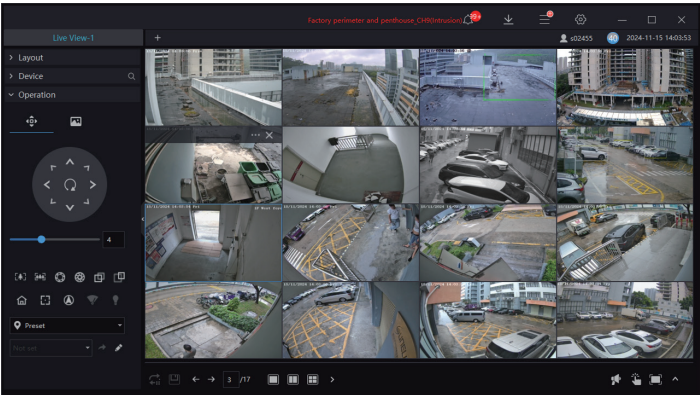
People Counting

Real - time counting of pedestrian traffic data in a specific area.



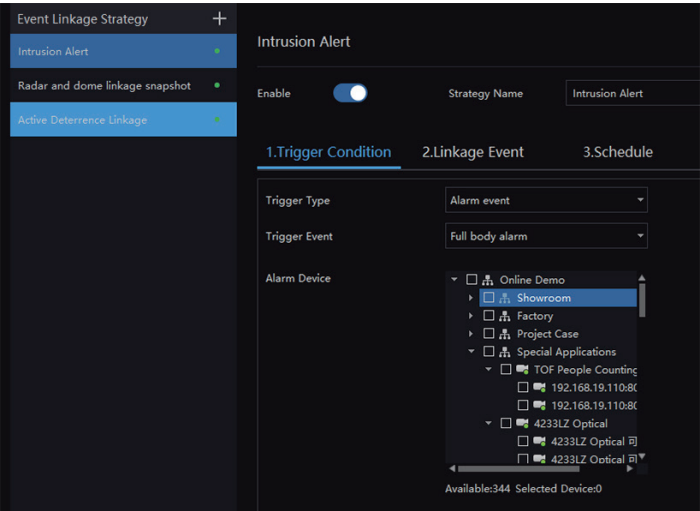
Layout

- Add, delete and modify live video layout
- Configure tour/ dwell



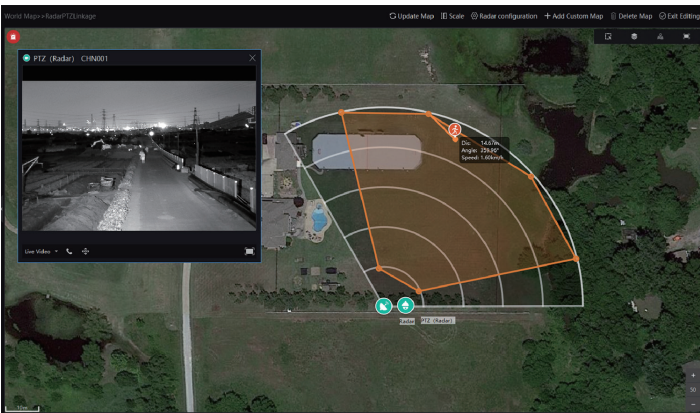
Event Linkage

Configure alarm events or alarm schedule to trigger SMTP, PTZ, I/O actions, etc.



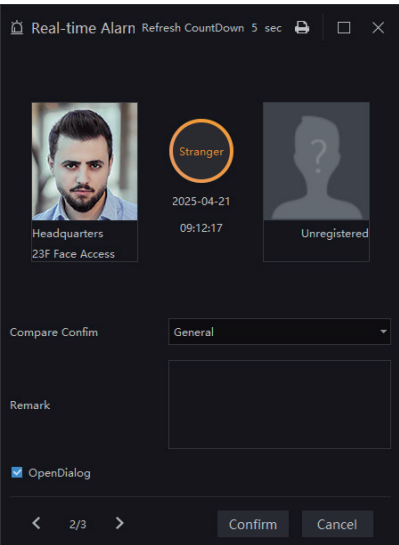
Radar-PTZ Linkage

When a long-distance target enters the guarded area, the radar will display the target's movement trajectory, linking the PTZ camera to accurately locate and track the intruding target, realizing perimeter protection without dead angle.



Alarm Pop-up Window

User-defined alarm message

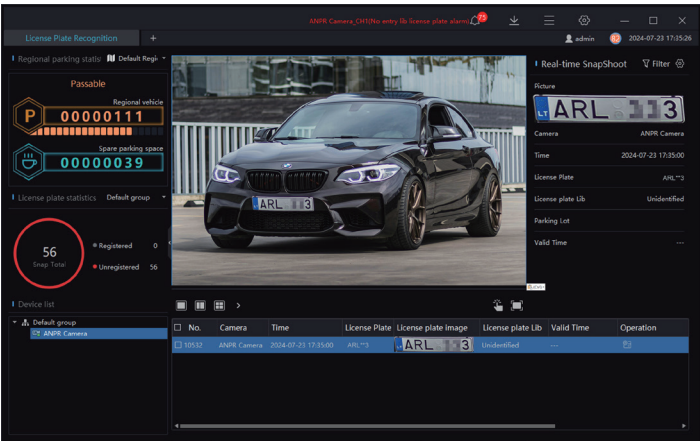


Intelligent Traffic



Parking Lot Management

- Supports white list, black list, visitor management
- Support list event linkage



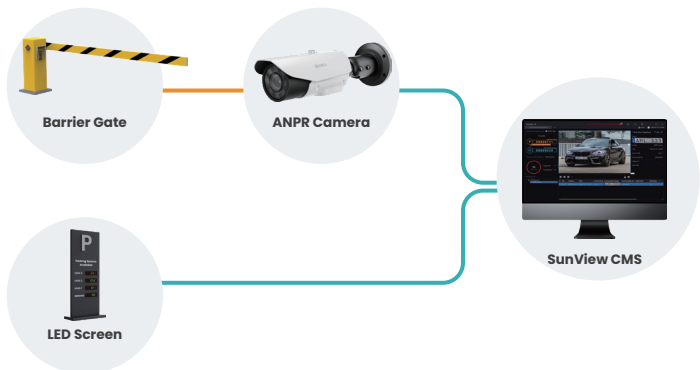
License Plate Library Management

- Supports white list, black list, visitor management
- Support for list event linkage



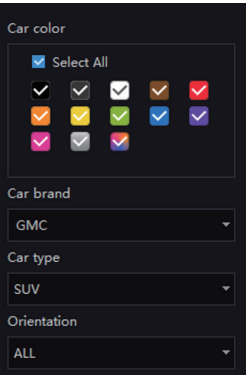
Parking Information Display

- CMS software to view parking information
- Displayed on the entrance and exit LED screen

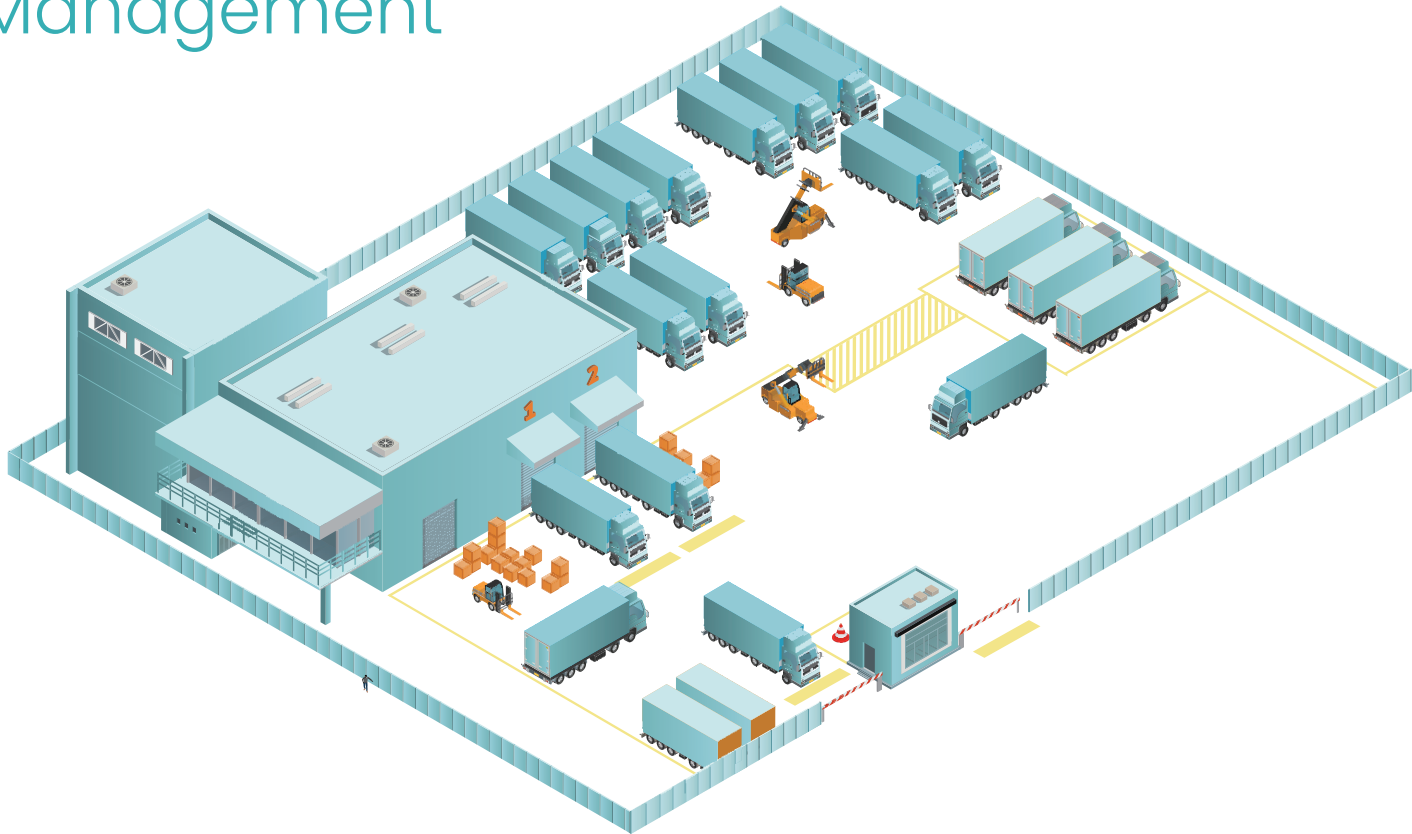


Attributes Retrieval

- Vehicle Attribute Recognition and Retrieval

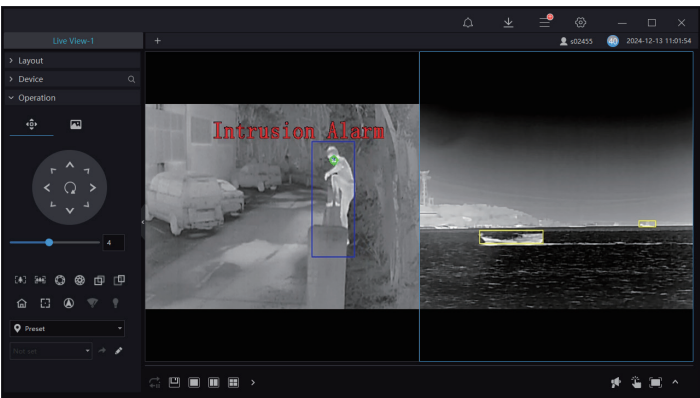


AI Thermal Management



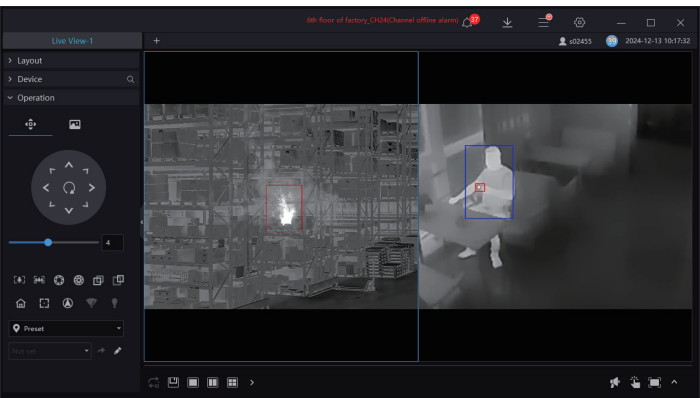
Perimeter

By integrating with AI thermal cameras, it is possible to achieve recognition and alarm for targets such as people, vehicles, and ships. Leveraging the all-weather monitoring advantage of thermal cameras, large-area and long-distance perimeter protection can be realized.



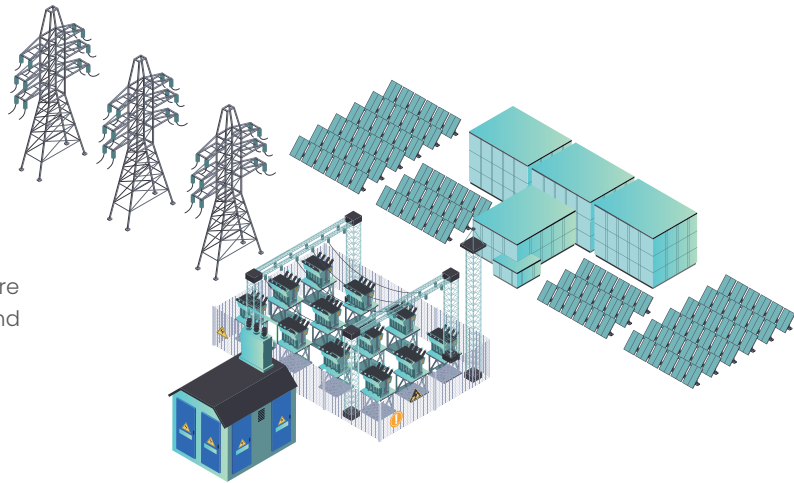
Fire Protection

SunView can receive fire spot, smoke & flame, and high temperature alarms reported by thermal camera. By providing early warning signals, fire hazards can be effectively avoided and resulting damages can be minimized.



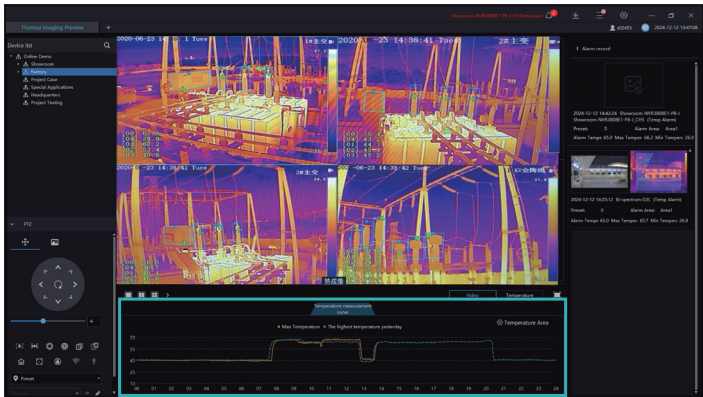
Industrial Temperature Measurement

Manage the temperature measurement thermal camera to implement temperature parameter configuration, temperature data query, inspection plan management, alarm snapshot and other features.



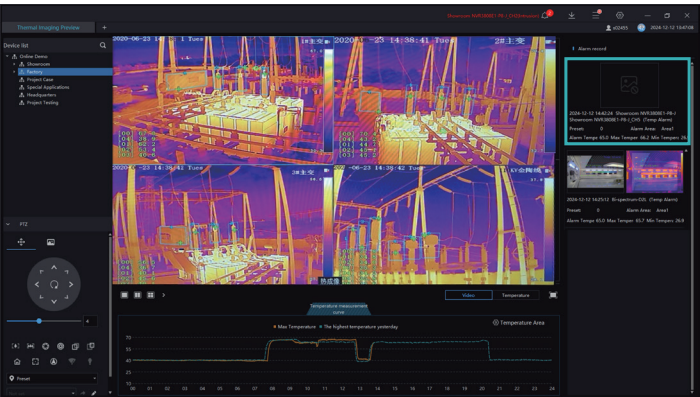
Temperature Curve

- The current curve is displayed by default
- Overlay the curve of yesterday for comparison
- The curve period is optional, with a maximum of 30 days



Alarm Record

- Device Grouping
- Preset Position
- Alarm Temperature



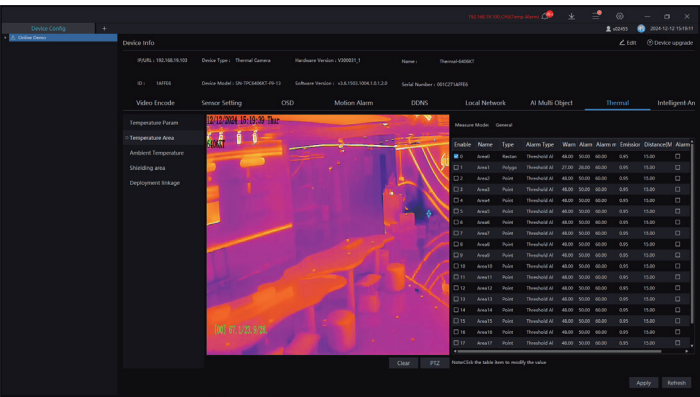
Display Mode

- Video
- Picture-in-picture
- Temperature



Thermal Temp. Configuration

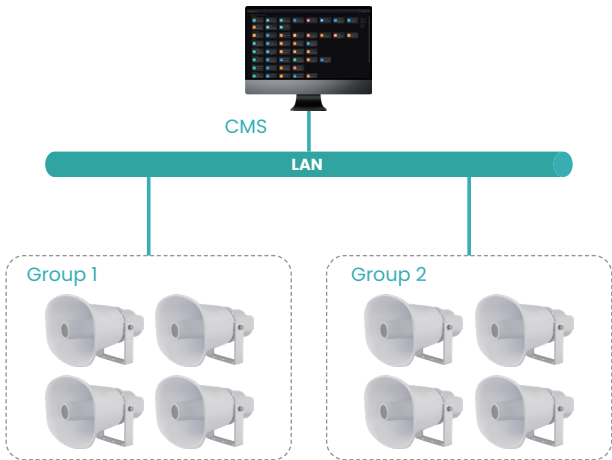
- Temp. Area
- Temp. Alarm Type
- Alarm Temp. Value



Network Broadcasting

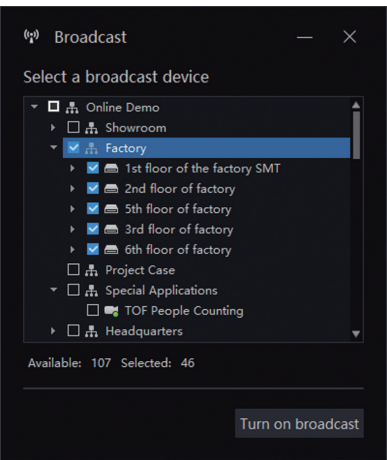


Group Management



Real-time Broadcast

- Group broadcast
- Pre-stored audio or Mic input audio source



Event Linkage

- Scheduled broadcast
- Alarm linkage broadcast



Audio Files Management

- Local audio clips
- Cloud audio link

