




Vandal Dome Network Camera Quick Setup Guide

NO:101-100-0520-04
Issue:1.4

Precautions

Fully understand this document before using this device, and strictly observe rules in this document when using this device. If you install this device in public places, provide the tip "You have entered the area of electronic surveillance" in an eye-catching place. Failure to correctly use electrical products may cause fire and severe injuries.

 WARNING	It alerts you to moderate dangers which, if not avoided, may cause minor or moderate injuries.
 CAUTION	It alerts you to risks. Neglect of these risks may cause device damage, data loss, device performance deterioration, or unpredictable results.
 NOTE	It provides additional information.

WARNING

- Strictly observe installation requirements when installing the device. The manufacturer shall not be responsible for device damage caused by users' non-conformance to these requirements.
- Strictly conform to local electrical safety standards and use power adapters that are marked with the LPS standard when installing and using this device. Otherwise, this device may be damaged.
- Use accessories delivered with this device. The voltage must meet input voltage requirements for this device.
- If this device is installed in places with unsteady voltage, ground this device to discharge high energy such as electrical surges in order to prevent the power supply from burning out.
- When this device is in use, ensure that no water or any liquid flows into the device. If water or liquid unexpectedly flows into the device, immediately power off the device and disconnect all cables (such as power cables and network cables) from this device.
- Do not focus strong light (such as lighted bulbs or sunlight) on

this device. Otherwise, the service life of the image sensor may be shortened.

- If this device is installed in places where thunder and lightning frequently occur, ground the device nearby to discharge high energy such as thunder strikes in order to prevent device damage.

CAUTION

- Avoid heavy loads, intensive shakes, and soaking to prevent damages during transportation and storage. The warranty does not cover any device damage that is caused during secondary packaging and transportation after the original packaging is taken apart.
- Protect this device from fall-down and intensive strikes, keep the device away from magnetic field interference, and do not install the device in places with shaking surfaces or under shocks.
- Clean the device with a soft dry cloth. For stubborn dirt, dip the cloth into slight neutral cleanser, gently wipe the dirt with the cloth, and then dry the device.
- Do not jam the ventilation opening. Follow the installation instructions provided in this document when installing the device.
- Keep the device away from heat sources such as radiators, electric heaters, or other heat equipment.
- Keep the device away from moist, dusty, extremely hot or cold places, or places with strong electric radiation.
- If the device is installed outdoors, take insect- and moisture-proof measures to avoid circuit board corrosion that can affect monitoring.
- Remove the power plug if the device is idle for a long time.

Special Announcement

- All complete products sold by the manufacturer are delivered along with nameplates, quick setup guide and accessories after strict inspection. The manufacturer shall not be responsible for counterfeit products.
- The manufacturer will update this manual according to product function enhancement or changes and regularly update the software and hardware described in this manual. Update information will be added to new versions of this manual without prior notice.
- This manual may contain misprints, technology information that is not accurate enough, or product function and operation description that is slightly inconsistent with the actual product, the final interpretation of company is as a standard.
- This manual is only for reference and does not ensure that the information is totally consistent with the actual product. For consistency, see the actual product.

NOTE

For more information, please refer to our website.

1 Packing List

Open the package, check the appearance of product for no obvious damage, and confirm whether the items are consistent with the list.

Table 1-1 Packing list

Component	Quantity	Remark
Vandal dome network camera	1	
Quick setup guide	1	
T15 screw driver	1	Large Dome
T10 screw driver	1	Mini Dome
Installation location sticker	1	
Stainless self-tapping screw	3	
Plastic anchor	3	
Network access port protective cover	1	
Terminal block	1	Optional

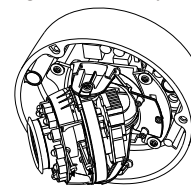
2 Device Structure

2.1 Device Ports

NOTE

Lens adjustment is only applied for large dome.

Figure 2-1 Lens adjustment



Focusing lever Zoom lever

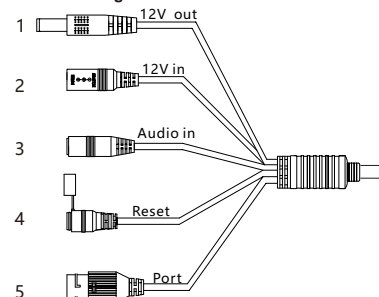
Table 2-1 Lens adjustment description

Port Name	Description
Focusing lever	Adjust the focus of lens, the default status is lock.
Zoom lever	Adjust the lens focal length, the default status is lock.

NOTE

Different devices may have different multi-heads; Please refer to the actual product.

Figure 2-2 Multi-head cable



CAUTION

Some models may only have port/power supply/reset button, but not other function, such as audio in/ 12 V out. The figure is only for referring; Please refer to the actual product.

Table 2-2 Multi-head cable description

ID	Core	Description	Remark
1	12V out port	Output the DC 12V to supply other device.	
2	Power supply (DC 12V)	Connects to a 12V direct current (DC) power supply.	
3	Audio input port	Receives an analog audio signal from devices such as a sound pickup device.	Applied for cameras with audio function
4	Reset button	Long press the reset button for 5 seconds to restore the settings.	
5	Network access port	Connects to a standard Ethernet cable or PoE. The green light is on, the network connection is normal; the yellow light flashes when the data is transmitted. Some models maybe not have the lights; Please refer to actual product.	Support PoE supply.

2.2 Camera Dimensions

NOTE

Different devices may have different dimensions; Please refer to the actual product.

Figure 2-4 Dimensions of Mimi Dome (Unit:mm)

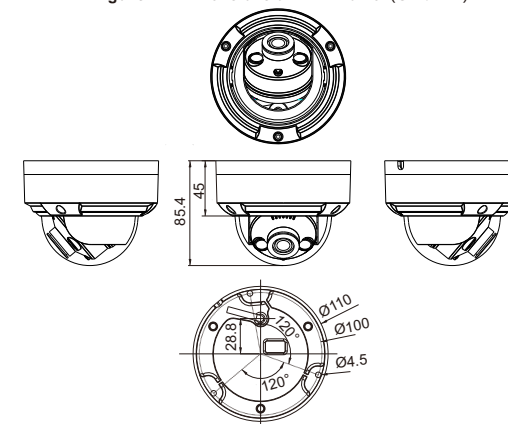
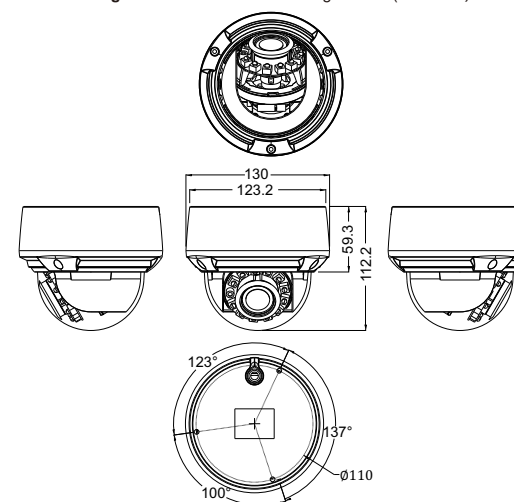


Figure 2-5 Dimensions of Large Dome(Unit:mm)



3 Device Installation

WARNING

To avoid moisture influence, install the dome cover at least half an hour after the camera is installed and powered on.

The vandal dome camera can be installed in the ceiling, wall, wall bracket or ceiling bracket. This section describes how to install the camera in the ceiling.

Installation Steps:

Step 1 Use the T15 screw driver in the accessory package to unscrew the three screws on the dome cover. The camera is opened, as shown in figure 3-1.

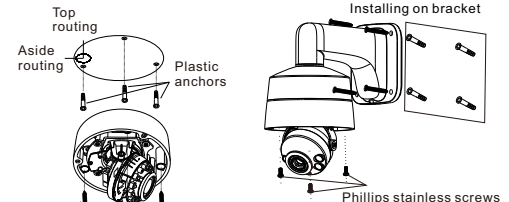
Figure 3-1 Opening camera



Step 2 Stick the Installation location sticker on the ceiling or wall. Drill three holes based on the marks on the sticker. Drive the plastic anchors into the holes.

Step 3 Fetch three black self-tapping screws from the accessory package. Then fix the screws to fasten the camera on the ceiling as shown in figure 3-2.

Figure 3-2 Installing housing



If users want to install large dome on a bracket or a wire box, you must fetch three phillips stainless screws in the accessory package to fix the camera, so that can achieve the waterproof effect. As shown in figure 3-2.

Step 4 Connect the network access port and power supply of the multi-head cables.

Step 5 Adjust the lens focal length and video angle range.

1. Press the arrows marked on the lining to remove the lining aside, as shown in figure 3-3.
2. View the video, loosen the slotted screw slightly as shown in figure 3-4 & figure 3-5, make camera's triaxial adjustments, adjust the screen to the scene you want to monitor, and then tighten the screws. Three-axis adjustment direction and angle are shown in figure 3-4 & figure 3-5.

Figure 3-3 Removing lining

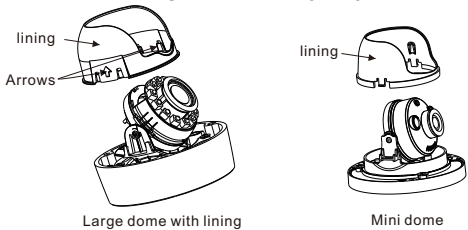


Figure 3-4 Three-axis adjustment

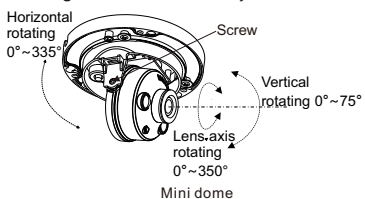
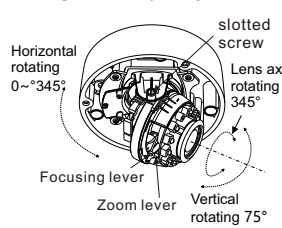


Figure 3-5 Adjusting the lens



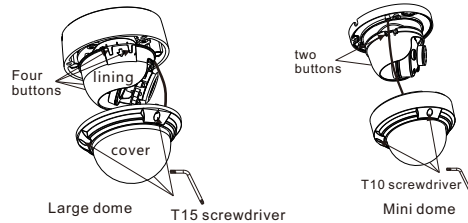
Step 6 Loosen the focus lever, and gently move the zoom lever to adjust the lens focal length to the desired position. Move the focus lever slightly to focus the lens clearly. Tighten the focus lever after completing the focusing operation. (This step is only applied for large dome).

NOTE

- Some models maybe not operate so much steps, please refer to actual product.
- While focusing lever is adjusted, an image might be blurry, move the zoom lever to fine-tune the image, until image is clear, lock the zoom lever.
- If the lens of camera is auto focus lens, set the focus value in Sensor > Lens control page in the web page.

Step 7 Assemble the lining with the main body and buckle the four button placements with the main body bracket. Aim the two screws hole with boss at the groove on the main body. Then fasten the dome cover, as shown in figure 3-6.

Figure 3-6 Assembling lining and cover



4 Quick Configuration(e.g Chrome)

4.1 Login

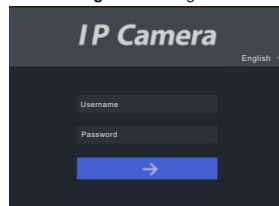
Step 1 Open the Google Chrome, enter the IP address of IP camera (default value: 192.168.0.123) in the address box, and press Enter. The login page is displayed as shown in figure 4-1.

Step 2 Input the username and password.

NOTE

- The default username and password are both admin. Modify the password when users logs into the system at first time to ensure system security.
- It is advised to restart camera three minutes later after modifying password to ensure modified successfully.
- You can change the system display language on the login page.

Figure 4-1 Login



Step 3 Click Login, the main page is displayed.

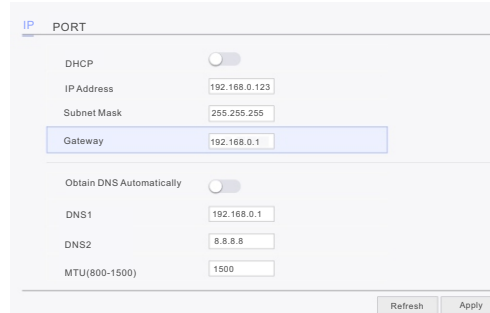
4.2 Modify IP address

Choose **Configuration > Device > Local Network**, the **Local Network** page is displayed.

Enter the IP address in the IP Address box and click **Apply** as shown in figure 4-2.

After the IP address is set successfully, please use the new IP address to log in the Web interface.

Figure 4-2 Local Network

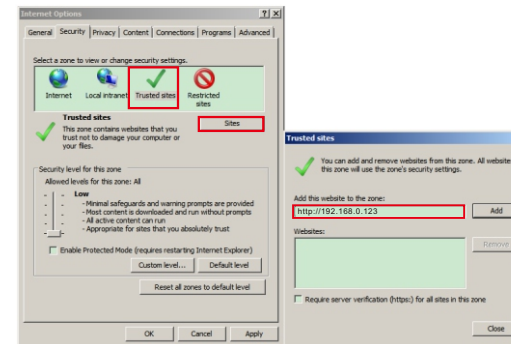


4.3 Browsing Video

To ensure the real-time video can be played properly, you must perform the following operation when you log in the web for the first time:

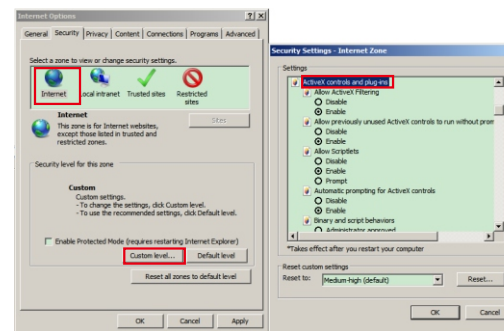
Step 1 In Google Chrome. Choose **Control panel > Internet options > Security > Trusted sites > Sites**, in the display dialog box, click **Add**, as shown in figure 4-3.

Figure 4-3 Adding a trusted site



Step 2 In Google Chrome, choose **Control panel> Internet Options > Security > Custom level**, and set **Download unsigned ActiveX control** and **initialize and script ActiveX controls not marked as safe for scripting under ActiveX controls and plug-ins** to **Enable**, as shown in figure 4-4.

Figure 4-4 Configuring ActiveX control and plug-in



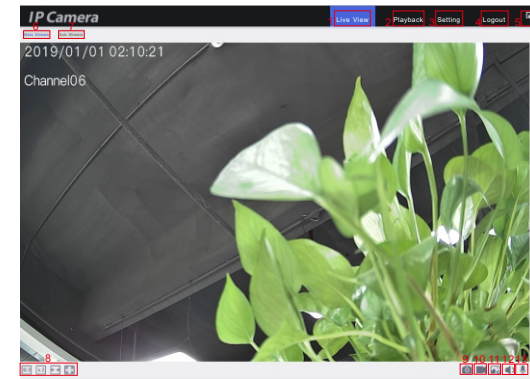
Step 3 Download and install the player control as prompted.

NOTE

If the repair tips displayed when installing the control, please ignore the prompt, and continue the installation, the login page is displayed when the control is loaded.

To browse a real-time video, click **Live Video**. The **Live Video** page is displayed, as shown in figure 4-5.

Figure 4-5 Live Video



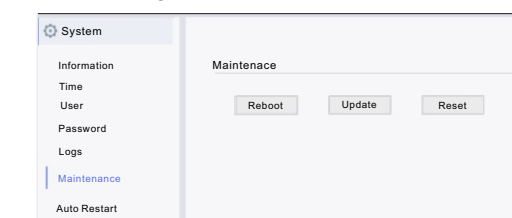
Description:

1. Users can view the live view, which shows the real-time image.
2. Playback, if the device installed with the SD card, users can view playback recording
3. Click **Setting** into the setting interface, set the parameters of device.
4. Click **Logout** to exit the live view interface, users need to input password to login again.
5. The alarm icon comes up when the alarm action is happening. 6 and 7 to switch the stream.
8. Switch the aspect ratio. Double-click in the video area to enter the full-screen mode, and double-click again to exit.
9. Snapshot, the picture will save to local folder(**Setting > Local**).
10. Record, click this and record the live view and save to local folder.
11. Click the icon to open the Image Setting page. On the Image Setting page, users can set image, scene, WB, daynight, noise reduction, and enhance image.
12. Audio, click open or close the audio.
13. Interphone, click open or close the interphone.

4.4 Maintenance

Choose **Setting > System > Maintenance**, the Camera Maintenance is displayed, as shown in figure 4-6. Users can reboot ,update and reset the camera in this page.

Figure 4-6 Camera Maintenance



- Click **Reboot**, the message "Are you sure to restart?" is displayed, then click **OK**, the device is restarted successfully five minutes later.
- Click **Update** to update software, choose software and confirm to update.
- Click **Reset**, the message "Are you sure to reset?" is displayed, then click **OK**, the device is reset to the factory settings.

CAUTION

Don't close the browser when the camera is rebooting. All parameters will be restored to factory default values. Be cautious to click **Reset**.